

WOLFSPEED (CREE) CAS325M12HM2 SiC MOSFET POWER MODULE

CAS325M12HM2

**1.2kV, 3.6 mΩ All-Silicon Carbide
High Performance, Half-Bridge Module
C2M MOSFET and Z-Rec™ Diode**

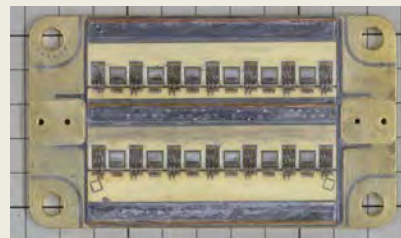
Features

- Ultra Low Loss, Low (5 nH) Inductance
- Ultra-Fast Switching Operation
- Zero Reverse Recovery Current from Diode
- Zero Turn-off Tail Current from MOSFET
- Normally-off, Fail-safe Device Operation
- AlSiC Baseplate and Si3N4 AMB Substrate
- Ease of Paralleling
- High Temperature Packaging, T_{max} = 175 °C
- AS9100 / ISO9001 Certified Manufacturing

Source : Wolfspeed datasheet



Overview



Cover
removal

- LTEC Corporation is planning to release structure analysis report of the Wolfspeed manufactured 3.6mΩ, 1200V SiC half-bridge power module. It will be released in Mar/2017.
- CAS325M12HM2 is used 'High Performance 62mm' state-of-art technology. It realize the downsizing and lightening and High temperature operation (175C)
- The contents of the report includes how the module realize the downsizing , the lightening , the reducing parasitic impedance and High temperature operation (175C) through the analysis of package details, layout analysis, and materials analysis (EDX)

Note: 2nd gen SiC device is used in this module.

LTEC has prepared 2nd gen and 3rd gen SiC device analysis reports.

Priced to sell at \$6,000

Contact LTEC Corporation

info@ltecusa.com

16G-0013-1

Table of Contents **(Tentative)**

Structure Analysis Section

1. Device summary, Table 1, Executive Summary
 - 1.1. Analysis results
 - Table 2. Package structure overview
 - Table 3. Device structure: SiC MOSFET
 - Table 4. Device structure: Layer materials and thicknesses
 2. Module analysis
 - 2.1. Appearance observation
 - 2.2 . Module constitution
 - 2.3. Device constitution, Electro node layout and wire bonding
 - 2.4. PCB layout for gate driver
 - 2.5. Structure and material analysis of substrate , solder and base-plate
 - 2.6. Resin FTIP (Glass-transition temperature)
 - 2.7. Grain analysis of transistor metal and bonding wire (EBSD)

